

CITY OF PACIFICA
PARKS, BEACHES AND RECREATION COMMISSION
AGENDA SUMMARY REPORT
July 27, 2010

SUBJECT:

Recommendation to council regarding the proposed dog park at the Pacifica Center for the Arts site.

BACKGROUND:

The Pacifica Organization of Canine Helpers (POOCH) presented the concept of a dog park at the Pacifica Center for the Arts (PCA) site (1220 Linda Mar Blvd.) to the Commission at a study session in October of 2008. POOCH (now a 501c3 non-profit) is "dedicated to improving the community by promoting the establishment and maintenance of at least one fenced off-leash dog park, where dogs and their guardians can play and socialize in a safe environment." POOCH made a concerted effort to contact neighbors and meet with the PCA tenants' representatives, as well as contact the local sports groups that use the fields regarding the proposal of a dog park at the PCA site.

It was noted at the study session that POOCH had formulated a well-planned project that would enhance the look of the site and provide a much needed dog park for Pacifica, considered a priority by many. This location could accommodate a park of this nature and is easily accessible as it is close in proximity to Highway 1. Pacifica is rich in open space but has limited available city-owned sites. The concept that POOCH has brought forward is considered to be creative, community-based, environmentally-sensitive, volunteer driven, and has the potential of bringing a first-class dog park in Pacifica.

At the regular PB&R Commission meeting in November of 2008, this item was placed on the agenda. Members of the public, including folks who live very near to the proposed location, spoke at the meeting. Several comments were in support of a dog park, while others brought up questions and concerns about the location, maintenance, potential for noise and smell.

The Commission voted to approve the east side of the Pacifica Center for the Arts site (1220 Linda Mar Blvd.) as a location for consideration of a dog park and recommend this item to the City Council for approval and authorization for staff to proceed with environmental reports and reviews.

At the December 8, 2008 City Council meeting, twenty members of the public spoke about the dog park agenda item. Concerns about the proximity to houses and the creek as well as noise and smell were also brought up. Other speakers expressed support for the project. Council voted to approve the east side of the PCA site as a location for consideration of a dog park and directed staff to proceed with environmental reports and reviews and authorized budget authority of \$60,000 from capital expenditures. POOCH is also raising funds and will be acquiring in-kind labor and material donations for construction of the project.

DISCUSSION:

Under the California Environmental Quality Act (CEQA), establishment of a dog park at the proposed location required the preparation of an Initial Study/Mitigated Negative Declaration (IS/MND) to evaluate potential environmental impacts associated with the dog park and develop measures to mitigate any such impacts. Accordingly, on April 28, 2010 the City published the Draft IS/MND (previously distributed), prepared by consultant TRA Environmental Sciences, Inc. (TRA). Potential impacts associated with biology, hydrology, and land use were identified and appropriate mitigation measures were developed to reduce those potential impacts to less than significant. The IS/MND concludes that, with incorporation of the mitigation measures, the proposed dog park will not result in any significant environmental effects.

The public review period for the IS/MND was from April 28, 2010 through May 29, 2010, and the City of Pacifica sent notices out to surrounding neighbors at the start of the public review period, on April 30, 2010. The City received a number of comments on the IS/MND, and those comments are summarized in the attached Response to Comments (RTC) memo, which also contains responses to those comments.

Some issues of concern did not warrant mitigation measures because they were not deemed to be significant environmental impacts and are not included in the IS/MND or RTC. Rules and regulations will be developed using existing dog park's best practices, as well as public and city staff input in order to address concerns about signage, education, number of dogs allowed per person, park usage and overall behavior guidelines.

A representative from TRA is in attendance at tonight's meeting and can answer any questions the Commission may have regarding the IS/MND or the RTC memo.

ATTACHMENTS:

- Pooch Information for Dog Park Study
- Response to Comments
- Dog Park Agenda Summary Report from 12/8/08 City Council Meeting

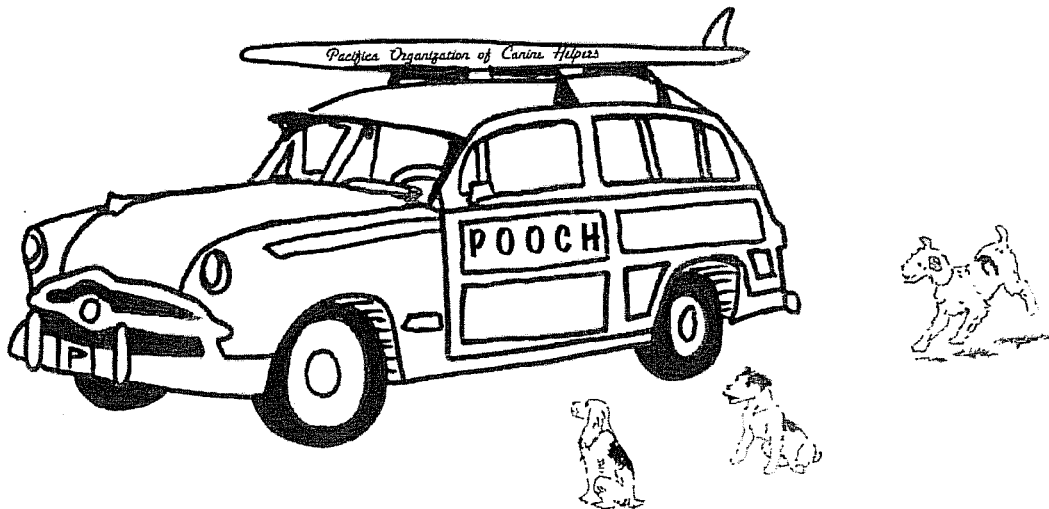
REFERENCES:

- Initial Study/Mitigated Negative Declaration (IS/MND) for the Pacifica Dog Park at the Pacific Center for the Arts – available on City's webpage

COMMISSION ACTION REQUESTED:

By motion, make a recommendation to council regarding the proposed dog park at east side of the Pacifica Center for the Arts site (1220 Linda Mar Blvd.).

POOCH



Pacifica Organization of Canine Helpers

POOCH INFORMATION FOR DOG PARK STUDY

About Pooch and Community Involvement.....	Page 1
History of Site Selection	Page 2
Potential issues.....	Pages 3,4
Potential solutions.....	Pages 3,4
Sources of How to build a Dog Park.....	Page 4
Benefits of a Dog Park.....	Pages 5,6
Our Vision of the Sanchez Arts Center Dog Park.....	Page 7
Attachments.....	Page 8
Site map.....	Page 9
Example of dog park rules.....	Page 10
List of local parks.....	Pages 11,12
Letter from the Peninsula Human Society.....	Page 13
Our first letter to the neighbors.....	Page 14
Our second letter to the neighbors.....	Page 15
Sample of internet listings.....	Page 16
Pictures of a few Bay Area Dog Parks.....	Pages 17-20

About us and our community involvement:

We are more than just a dog park group- Our mission statement:

We are dedicated to improving our community by promoting the establishment and maintenance of at least one fenced off-leash dog park, where dogs and their guardians can play and socialize in a safe environment.

Our purpose is to unite, integrate and serve the needs of the Pacifica community through services that facilitate responsible dog guardianship and good dog citizenship

In the summer of 2007, four Pacificans (two owners of 3 dogs, a dog walker and a dog trainer) thought it would be helpful to everyone if Pacifica had its own dog park and we could provide a network of support for dog interested people.

A few facts we have learned: Dog parks are not new, and we have over 52 public dog parks in the SF Bay Area (see attached). A recent Gallup poll stated (and the Calif. Assoc. of Parks and Rec. Commission agrees) that 42 percent of households in the United States share their home with a dog, approximately 73 million dogs. And, according to the Web site, www.thedogpark.com, there are more than 700 dog parks nationwide.

Since our first meeting a little over a year ago, we have passively collected over 3000 signatures of Pacificans who also want a dog park in Pacifica.

We also received letter of support from Scott Delluchi - VP of the Peninsula Humane Society and SPCA (See attachment)

Beyond working toward having dog parks in Pacifica, we also have participated in community events:

- Fog Fest booth and parade

- Farmers Market participation and helping to sit with the dogs as the
Folks shopped

- Beach clean up days

- Support the Resource center with pet supplies

- Weekly Unofficial Poop Pickup patrol in the southern end of Pacifica (See Pacifica
Tribune article November 5th)

- We agreed to the city's request for one weekend to hand out flyers to encourage
leashing dogs along Linda Mar Beach (waiting for the flyers)

- We have discussed Park ideas with our local veterinarians

- We have been scheduled to talk with the Open Spaces Committee

To help communicate with the community we have a web page www.PacificaPooch.com and a Yahoo group pacificapooch@yahoo.com

History of the Park site selection:

We worked with the city managers office (Stephen Rhoades) and Parks, Beaches and Recreation department (Mari Brumm-Merrill) for over a year to determine a suitable site.

Many sites were visited and discussed and the site that appeared excellent to both the city and the Pooch folks was the Sanchez Art Center, East side lawn area. (See attached map)

We discussed this idea with the tenants of the Sanchez building and the neighbors along the boarder of the proposed park. We heard there feedback and used that information in designing the park plan. For the neighbors, if we did not meet with them, we left behind a bright blue sheet of info (see attachment)

We went back to these same folks with the next stage. The Performing Arts Board voted unanimously to support the park. At the tenants meeting, all those present including the performing arts, the artists, and the credit union were all in favor with us proceeding. The neighbors were also contacted again. About ½ were in favor, and ½ did not want it in their area. One quote: “We have always thought of Sanchez as our backyard, and we don’t want change.” We left behind a pink sheet including the site map with the folks we did not personally meet with. (see attachment).

Two main concerns were noted

Noise has come up as a concern and here is some research:

At other parks, Noise was noted depending on what was there before. Since a 45 a day child center was once there, and there are sporting events that create probably more noise than a dog park, the noise of a dog park may not be considered elevated. Many times the concerns about noise were not realized after the park was built. Cities often found backyard barkers were far more a concern than dog park barking: Active dogs bark less than bored dogs. If noise is an issue, to help control noise several things can be done:

1. Post Rules including Park operating hours (See attached for example rules from AKC)
2. Noise levels were dependent on usage and community involvement. There may be certain hours; the park is used more than others (most parks are used heaviest on the weekends and late afternoon, early evening). We can also to help teach uninformed dog owners how to attend to a barking dog.
3. UC Davis suggests if noise is an issue to: Build Vegetative barriers, post hours, enforce the park rules and provide extra parking. All of which we plan to do.

Another concern was poop pick up. Successful parks usually deal with it as we hope to:

1. Someone provides pickup bags. Usually it is the user group supporting the park - Pooch. We plan to raise the money through donations or fundraisers and have several poop bag

distribution boxes. We are also talking with local business that may want to sponsor this with logo type poop bags.

2. In the beginning, we have schedules to have someone present during the most used times. That someone spends a lot of time putting on a smile and educating. With time and effort and encouragement visitors learn that they all have a stake in seeing that the park is kept clean, (Note the tribune article of our Pooch Poop Patrol; we have started this idea outside the park) and quiet.

3. Good signs also help. Thus, every visitor is encouraged to speak up when someone misses a poop. The approach is to assume either that the person missed the event (very often true) or that they simply don't know better. As odd as it may seem people really may not know how to find the bags, how to use them, and how badly it can screw things up if people don't do it. They may not understand that other people - not paid staff - will have to do it if they don't (or risk losing the park). Community peer pressure. When tactfully done this works for 90-95% of visitors. It is especially effective in the smaller parks where there is no place for the careless and clueless to be completely unobserved.

The user group takes responsibility for picking up after the clueless and the careless. Many of us have the philosophy that we pick up whatever we see because surely we must have missed our own dogs poop a time or two ourselves.

We also plan to have community pick up days when we make it an event that includes sprucing up the park, and very thorough clean ups.

How to build a dog park sources:

Some of the Sources of information about how to build a dog park include:

- National Recreation and Park Association
- American Kennel Club
- ASPCA: The American Society for the Prevention of Cruelty to Animals
- International Association of Canine Professionals
- Association of Pet Dog Trainers
- National Association of Animal Behaviorists
- Humane Society of the United States

We also have received input on Park ideas from our local Veterinarians

Benefits of a Dog Park

Much research including the above mentioned publications have outlined the benefits of a dog park:

For the Dog

1. Research has confirmed it is critical for most dogs to get consistent off leash time to run and play, as well as socialize with other dogs.
2. Dogs left in the back yard only -often leads to excessive barking and destruction. This is one of the reasons dogs are surrendered to shelters.
3. A fenced in dog park protects dogs from cars
4. A fenced in dog park protects the dogs from environmental dangers.

For the Dog Owner

1. Dog gets required exercise in a safe environment
2. If owner has limited physical capabilities, the dog can exercise and the owner does not need to keep up.
3. Helps promote responsible dog ownership
4. Save gas by staying in Pacifica to use a dog park
5. Allows people to meet and form the bonds of community.
6. Allows people to have the pleasure of watching their dogs at play.
7. Contributes to the overall physical fitness of people by encouraging them to exercise with their dogs.
8. Provides an opportunity for dog owners to enjoy the outdoors.

For the Community

1. Promotes responsible pet ownership.
2. Provides elderly and disabled owners with an accessible place to exercise their companions.
3. Enables dogs to legally run off-leash.
4. Promotes public health and safety.
5. Provides a tool for realistic enforcement of dog control laws.
6. Keeps Pacificans in Pacifica rather than going over the hill to visit all the other parks in the area. These visits often including shopping outside Pacifica as well.
7. City visibility in dog travel sites. (See a sample of one of hundreds of dog friendly listings)

We have also, beyond reading materials from various organizations, and contacting several other dog parks, we have visited many dog parks to learn how to best build the Pacifica parks. We also have a close working relationship with the San Bruno dog park people.

Several of us have reported on parks throughout the Bay area, and one of us has traveled from the Bay Area to Washington, and again to Texas, and specifically stopped at various dog parks along the way. So we have many examples of the good, and the not so good to learn from. Therefore, our vision or plans for our park came with quite a bit of research, both through literature and practical experience.

Our vision of the Sanchez Art Center Dog Park:

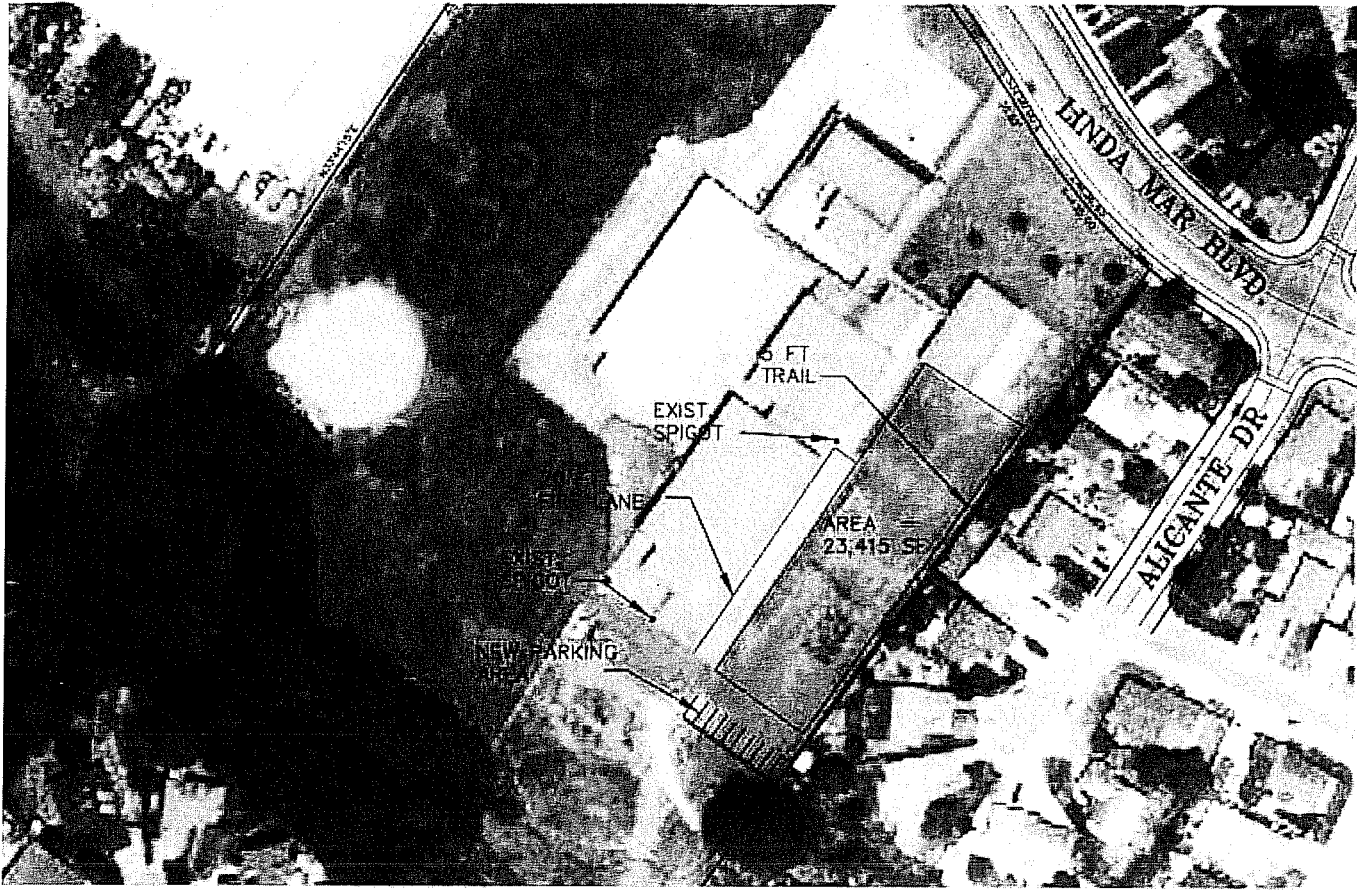
1. Double gated – This would promote safety and prevent accidental escapes. We would also have the rule of leashing dogs until they are through the first gate.
2. Totally fenced
3. ADA accessible
4. 2 sections with a center fence that has a gate to open, so the park can either be 2 separate parks, or one larger park. This will allow the separation of large and small dogs.
5. We understand service dogs have special needs and often can not use a dog park; we plan to include them in our design. We know of no other dog park that provides for the special needs of service dogs. (One of our members has a service dog and is helping us explore this)
6. One of our members is proposing a project (our dog park) to the UC Master Gardener to study grasses that might be suitable in a dog park. One of their suggestions already has been to have fake water hydrants in an area with a non grass covering to encourage urination off the grass. We are also thinking about a digging pit.
7. We are researching Shrubs and landscaping to help abate any additional noise we may make, although a prior tenant was a preschool with approximately 45 children. We believe the noise maybe less.
8. Water fountains for both dogs and humans on each side of the double section of the park. We are in discussions with local plumbers who would donate their help
9. We plan to have a locked gate at one end to let in the lawn mower vehicle
10. The city plans to have at least twice a week garbage pick ups – again to eliminate the concern over waste.
11. We have a schedule in place for formal as well as informal poop pickup detail.
12. We are in talks with local nursery's to hopefully donate landscape and indigenous trees for shade.
13. We are in the process of filing (thanks to contributions of time and money of accountants in the town) as a 501 C 3. so private donations will not only help build and maintain the park, but they will be tax deductible as well.
14. One of the members of Pooch is on the board of director of Friends of SF Animal Care and Control along with the owner of a 100 a day dog day care in SF; and he turns his client's dog's waste into fuel. We are discussing this with him and exploring that potential here in Pacifica
15. We are discussing Signage to help promote responsible dog ownership. Posted rules– actively promote poop pick up, respect for Art Center privacy, and noise abatement.
16. We have planned for extra parking (See attached site map)

We have a possible site at the north end of Pacifica we are exploring to meet the needs of people at that end of town.

Attachments to follow

1. Site map
2. Example of dog park rules
3. List of local parks
4. Letter from the Peninsula Human Society
5. Our first letter to the neighbors
6. Our second letter to the neighbors
7. Sample of internet listings
8. Pictures of a few Bay Area Dog Parks

The site of the proposed Park



CITY OF PACIFICA
PUBLIC WORKS / ENGINEERING DIVISION

SANCHEZ ARTS CENTER

DESIGNED BY
DRAWN BY
CHECKED BY
APPROVED BY

REV.	DATE	DESCRIPTION	BY

SCALE
PLANNING

Examples of Park Rules from the American Kennel Club

- Owners are legally responsible for their dogs and any injuries caused by them.
- Puppies and dogs must be properly licensed, inoculated and healthy.
- Animals should wear a collar and ID tags at all times.
- Owners must clean up after their dogs.
- Dogs showing aggression towards people or other animals will be removed from the park. Animals who exhibit a history of aggressive behavior will not be permitted.
- Puppies using the park must be at least four months old.
- Owners should not leave their dogs unattended or allowed out of sight. If young children are permitted in the dog park, they too should be under constant supervision.
- Dogs in heat will not be allowed inside the park.
- Owners must carry a leash at all times. Dogs should be leashed before entering and prior to leaving the park.
- Violators will be subject to removal from the park and suspension of park privileges.

We have not decided on the rules yet, we plan to study the above rules and we are thinking of other rules concerning:

Not allowing Unneutered male dogs over the age of 8 mos

If Young Children are permitted in the park

No smoking, tobacco, alcohol or drugs

No glass

No food

Must have a dog to enter

Art Center privacy

Some Local Public
dog parks

Mountain View

Mountain View Dog Park

Rengstorf, Cuesta and
Whisman Parks

Palo Alto

Mitchell Park

Greer Park.

Hoover Park

Lake Lagunita.

Morgan Hill

Morgan Hill Dog Park

Foster City

Foster City Dog Park

Redwood City

Redwood Shores Dog Park.

San Carlos

Heather Park and Dog
Exercise

Belmont

Belmont Dog Run

Water Dog Lake Park.

San Ramon

Alta Mesa Dog Park.

Del Mar Dog Park,

Union City

Drigon Dog Park,

San Ramon

Memorial Park Dog Run,

San Bruno

San Bruno Dog Park

Burlingame

Burlingame Dog Park.

San Mateo

Seal Point Park.

Fremont

Central Park Dog Park

Dublin

The Dougherty Hills Dog
Park

San Lorenzo

San Lorenzo Dog

Scotts Valley

The Scotts Valley Dog Park

Santa Cruz

Lighthouse Field and Its
Beach

University Terrace

Aptos

The Aptos Dog Park

San Francisco

Alamo Square Off Leash
Dog Park

Alta Plaza Off Leash Dog
Park

Bernal Heights Off Leash
Dog Park

Brotherhood Mini Off Leash
Dog Park

Buena Vista Off Lead Dog
Park

Corona Heights

SF parks continued:

Crocker Amazon Off Leash
Dog Park

Delores Off Lead Dog Park

Douglass Park, Upper Field
Off Leash Dog Area –

Eureka Valley Off Leash
Dog Park

Fort Miley Off Lead Dog
Area

Glen Park Off Leash Dog
Area

Golden Gate Park Off Leash
Dog Areas

Jefferson Square Off Lead
Dog Park

Lafayette Park

McKinley Off Leash Dog
Park

McLaren Park Off Leash
Dog Areas

Mountain Lake Off Leash
Dog Park

Pine Lake Off Leash Dog
Park

Pine Lake/Stern Grove Trail

Portrero Hill Mini Off Leash
Dog Park

St Mary's Off Leash Dog
Park

Stern Grove Off Leash Dog
Park

Upper Noe Off Lead Dog

Walter Haas Playground and
Dog Park

West Pacific Avenue Park

Letter of support from Peninsula Human Society

September, 2008

POOCH
P.O.Box 1403
Pacifica, CA 94044

Dear POOCH,

We understand your group, Pacifica Organization of Canine helpers (POOCH) has taken several important steps toward creating an off-leash dog park in Pacifica. Congratulations!

From all accounts, your group has gone about this process the right way. You've been flexible in terms of potential sites and may, in fact, have a strong possibility after speaking with the city. And, you are taking a proactive approach with regard to neighbors near this site; soliciting input from all parties -- not just dog owners -- and planning to bring your proposal to the City Council only *after* you've addressed all neighbors' concerns.

Based on what we know about your group's approach, and our belief that all our county's cities should have a designated off-leash space for owners to exercise their dogs, the Peninsula Humane Society & SPCA enthusiastically supports your plans.

As the contracted animal control provider for our county and cities, we're charged with keeping people and their animals safe, which means enforcing the leash law. Yet, as a *humane* society, we encourage people to provide off-leash exercise for their dogs to keep them happy, healthy, and well socialized. The ideal solution is a well-managed, designated off-leash dog park.

Dog parks allow for aerobic exercise and give dogs a chance to socialize with other dogs, which is vital to their well-being. Parks also provide communities a designated space so dog owners are less likely to take dogs where they aren't welcomed; this helps relieve neighborhood tensions.

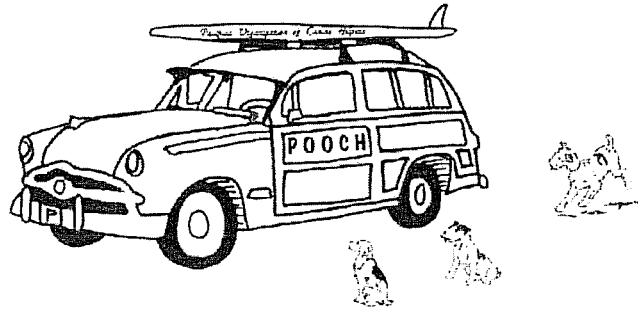
We hope you are able to see your project reach a successful completion. All members of your community (two and four-legged) will be better served.

Sincerely,

Scott Delucchi
Sr. Vice president, Community Relations
Peninsula Humane Society & SPCA

(Leave behind #1 bright blue paper)

P O O C H



Pacifica Organization of Canine Helpers

We are sorry we missed you.

We are an organization that has been working for about a year to establish a dog park in Pacifica. We have not only collected about 2600 signatures of support, we have been working with the city – including the city manager and the head of parks and rec- to find a park site.

The culmination of meetings, site visits, and discussion has brought us to Sanchez Art Center, the flat side yard on the east side as a potential dog park. Before we continue investigating this possibility, we would like to hear from you. We would like to schedule a convenient time to meet with you to discuss this potential site and get your feedback. We appreciate your time and look forward to meeting with you.

Here is Bev's (one of the founders of Pooch) contact information, please let us know when we can get together to discuss the possibility of a dog park.

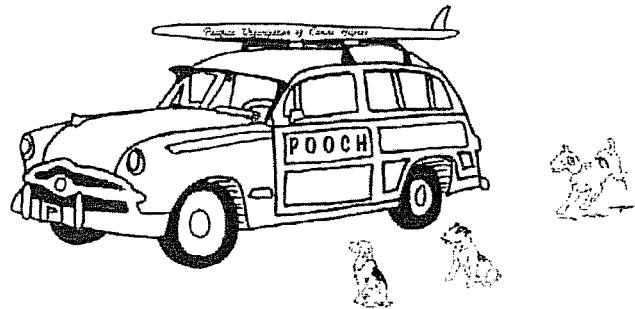
Bev Kingsbury
650-888-4743
bev@PawsitiveThinking.com

To learn more about Pooch, please visit our website at www.PacificaPooch.com

Thank you and we look forward to hearing from you.

(leave behind #2 bright pink paper)

P O O C H



Pacifica Organization of Canine Helpers

We are sorry we missed you.

The dog park planning is continuing and we wanted to give you an update

As you may know we are an organization that has been working for over a year to establish a dog park in Pacifica. We have now collected over 3000 signatures of support, and we continue working with the city – including the city manager and the head of PB&R- to finalize a park site.

The culmination of meetings, site visits, and discussion has brought us to Sanchez Art Center, the flat side yard on the east side as a potential dog park. We would like to schedule a convenient time to meet with you to discuss the city's plan for this site. Some of the details of this plan include a 6 foot path between the back fences of residents and the planned park. We would like to discuss the other details of this plan with you. We appreciate your time and look forward to meeting with you.

There is a study session meeting open for public comment about this park on November 12, Wednesday at 5:30 pm at the community center. You are invited to attend.

Bev Kingsbury
650-888-4743
bev@PawsitiveThinking.com

To learn more about Pooch, please visit our website at www.PacificaPooch.com

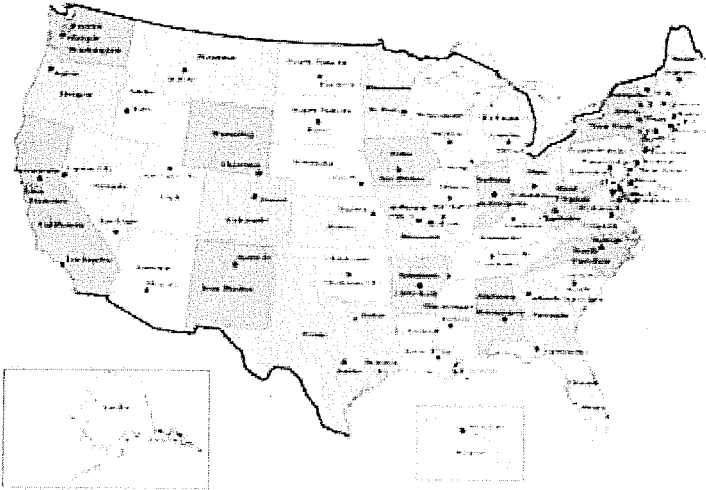
Thank you and we look forward to hearing from you.

(A copy of the Sanchez Art Center Proposed site map was attached)

Sample of one of many listing for Dog Friendly (We would like to see Pacifica mentioned)

United States and Canada Off-Leash Dog Park Guide

For Listings, Select a State from the Map or List Below or



<http://www.dogfriendly.com/server/travel/guides/dogpark/dogpark.shtml?gclid=CNyPsfeE4pYCFSJlagodHAXmOA>

Palo Alto - Peninsula, California Dog-Friendly City Guide

We focus on listing places that welcome ALL well-behaved dogs, regardless of size! (see below)***

Off-Leash Dog Parks

- City of Belmont Dog Park -2525 Buena Vista Avenue **Belmont**
- Bayside Park Dog Park -1125 South Airport Blvd **Burlingame**
- Foster City Dog Run -Foster City Blvd at Bounty **Foster City**
- Coastside Dog Park -Wavecrest Road **Half Moon Bay**
- Mountain View Dog Park -Shoreline Blvd at North Rd **Mountain View**
- Greer Dog Park -1098 Amarillo Avenue **Palo Alto**
- Hoover Park -2901 Cowper St **Palo Alto**
- Mitchell Park/Dog Run -3800 Middlefield Rd **Palo Alto**
- Shores Dog Park -Radio Road **Redwood City**
- San Bruno Dog Park -Commodore Lane and Cherry Ave **San Bruno**
- Heather Dog Exercise Area -2757 Melendy Drive **San Carlos**
- Pulgas Ridge Off-Leash Dog Area -Edmonds Road and Crestview Drive **San Carlos**

Examples of Dog Parks around the Bay



Commodore Park in San Bruno

They poop, we scoop

Pacifica Tribune Staff



Have you seen these gals? Each week now these ladies have been picking up dog poop around town. Sometimes on Linda Mar Blvd, sometimes along the beach walkway. Last week they picked up about 30 pounds of dog waste along the path between the Beach access parking lot and Crespi Drive. They started this project because whenever they were discussing their work on a dog park, everyone

talked about Poop and how it was not picked up enough. So these Pacificans decided to do something about it. Hopefully their efforts will remind people to bring and use their dog's poop bags and this wagon will no longer be needed. As members of POOCH (Pacifica Organization Of Canine Helpers) Joann Alonzo, her companion dog Raven, and Anne DaAngelo are promoting responsible dog ownership, just one of the many things POOCH is involved in. Pooch is working toward building at least one dog park in Pacifica, have helped with several Beach Clean up Days, donated pet food to the Pacifica Resource Center, plan to hand out leaflets on the beach to promote leashed dogs on common use beaches and walked in the Fog City Parade for the last two years. POOCH meets during the winter at the Police Station community room the first Tuesday of the month at 7 p.m. To learn more about POOCH, please visit their web site www.PacificaPooch.com or join their yahoo group at pacificapooch@yahoogroups.com

Advertisement

PrinterStital acs by Format Dynamics



Photo courtesy of POOCH

POOCH members help tidy up the beach

POOCH (Pacifica Organization Of Canine Helpers) joined in on beach cleanup day, March 15. POOCH is an organization dedicated to improving our community by promoting the establishment and maintenance of a humane off-leash dog park, where dogs and their guardians can play and socialize in a safe and segregate environment. Their purpose is to unite, integrate and serve the needs of Pacifica community members, dog guardians and dog centric businesses by enabling a network of collaboration. Meetings held at 6:45 p.m. on the second Tuesday of every month at: Extreme Pizza, 5430 Coast Highway at Pedro Point. Dogs and their guardians are welcome.



545 Middlefield Road, Suite 200
Menlo Park, CA 94025-3472
Tel: (650) 327-0429
Fax: (650) 327-4024
www.TRAenviro.com

Memo

To: Michael Crabtree, Planning Director
Mike Perez, Parks, Beaches and Recreation Director
City of Pacifica
1400 Francisco Boulevard
Pacifica, CA 94044

From: Christine Schneider, Senior Project Manager

Subject: Draft Response to Public Comments on the Pacifica Dog Park at the Pacifica Center for the Arts Pacifica Draft Initial Study/Mitigated Negative Declaration

Date: July 22, 2010

Introduction

This memo contains responses to all public comments received during the Public Review period for the Pacifica Dog Park at the Pacifica Center for the Arts Pacifica Draft Initial Study/Mitigated Negative Declaration (IS/MND). The public review period for this IS/MND was from April 28, 2010 through May 29, 2010. The City of Pacifica sent notices out to surrounding neighbors at the start of the public review period, on April 30th. A public hearing is scheduled to be held on by the Parks, Beaches and Recreation Commission to approve the project and adopt the IS/MND on July 27, 2010. This memo, combined with the IS/MND comprises the Administrative Record for the project. All comments listed here are incorporated by reference into the IS/ND.

For future reference, members of the public can discuss any of the issues with the City staff at the Parks, Beaches and Recreation Department, 1400 Francisco Blvd, Pacifica, CA 94044, (650) 738-7381, perezm@ci.pacifica.ca.us

It is the intent of the California Environmental Quality Act (CEQA) to solicit information from agencies and the public about a project's environmental effects, and in doing so, to avoid or reduce impacts of the project. The comments contained in this document, as well as the responses, will ensure that the project does not result in significant impacts to the environment.

The decision for the City of Pacifica to prepare an Initial Study and Mitigated Negative Declaration is supported by Section 15064(f)(2) of the CEQA Guidelines, which states that

(2) If the lead agency determines there is substantial evidence in the record that the project may have a significant effect on the environment but the lead agency determines that revisions in the project plans or proposals made by, or agreed to by, the applicant would avoid the effects or mitigate the effects to a point where clearly no significant effect on the environment would occur and there is no substantial evidence in light of the whole record before the public agency that the project, as revised, may have a significant effect on the environment then a mitigated negative declaration shall be prepared.

Summary

The City received 29 comment letters from 25 different commenters during the public review period. In general, the City received public comments related to the following issues:

- 1) Project Support (19 commenters)
- 2) Noise Pollution (7 commenters)
- 3) Creek Pollution (5 commenters)
- 4) Odors (4 commenters)
- 5) Traffic (2 commenters)
- 6) Public Safety (2 commenters)
- 7) Alternative Site Evaluations (7 commenters)
- 8) Public Notice (2 commenters)
- 9) Preparation of an EIR (1 commenter)
- 10) Setbacks (1 commenter)
- 11) Other – Project Financing (4 commenters)
- 12) Other – Property Values (2 commenters),
- 13) Other – Dog Limits (1 commenter).

In many cases the City received comments from two or more commenters that were substantially the same. In light of this, Section B of this memorandum responds, *en masse*, to the general issues raised by the public during the comment period (e.g., project support, noise, etc.) rather than to each specific comment raised by the individual commenters listed in Part A, with the following exceptions:

- Comments related to Issue Nos. 8 (Public Notice) and 9 (Preparation of an EIR) are addressed in the introduction to this memorandum.
- Comments related to Issues No. 11 (Project Financing) and 12 (Property Values) are unrelated to the environmental issues and CEQA review of the proposed project and are therefore outside the scope of this memorandum.

Memo Organization

This memo has three parts:

Section A: Listing of all Public Comment Letters Received, by date;

Section B: Responses to Comments; and

Section C: Errata Sheet

The City did not receive comments from any local, responsible, or trustee agency.

The City received 29 public comments from 25 different commenters as follows:

1. Letter from Mari Brumm Merrill. April 30, 2010.
2. Email from Noami, Patrick, and Scout Shrouf. May 1, 2010.
3. Email from Ken and Judy Krause. May 1, 2010.
4. Email from Marsha Murphy. May 2, 2010.
5. Email from Anneli Loeffler. May 2, 2010.
6. Email from Karen (last name not provided). May 4, 2010.

7. Telephone communication from Alice Brady. May 6, 2010.
8. Email from Anne D'Angelo. May 6, 2010.
9. Email from JoAnn Alonzo. May 6, 2010.
10. Email from Jennifer Serrano. May 7, 2010.
11. Email from JoAnn Alonzo. May 8, 2010.
12. Email from Petra Walter. May 10, 2010.
13. Letter from Beverly Kingsbury. May 10, 2010.
14. Email from Jim and Nancy Cummins. May 11, 2010.
15. Email from Anneli Loeffler. May 11, 2010.
16. Email from Michelle Gray. May 12, 2010.
17. Email from Anne D'Angelo. May 14, 2010.
18. Email from Petra Walter. May 14, 2010.
19. Email from Robert Hughes and Jennifer Alpaugh. May 20, 2010.
20. Email from Tracy Buie. May 22, 2010.
21. Telephone communication from John Tozzini. May 24, 2010.
22. Email from John Keener. May 26, 2010.
23. Email from Charles Parker. May 26, 2010.
24. Email from Ian Woodworth. May 26, 2010.
25. Email from Forrest, Charles, and Judith Parnell. May 26, 2010.
26. Telephone communication from Bill Bassett. May 27, 2010.
27. Email from Catherine Smith. May 27, 2010.
28. Email from Jacqueline Smith. May 27, 2010.
29. Letter from Stephen Johnson. May 27, 2010.

B. Responses to Comments

As stated above, there were 29 individual letters or calls to the City about this project, including both comments for and against the project. As stated above, a few key issues came up frequently in the comment letters, and so this Response to Comments section is organized by issue, not by comment. The following issues are addressed:

1. Noise Pollution
2. Creek Pollution
3. Odors
4. Traffic
5. Public Safety
6. Alternatives

1. Noise Pollution

The IS/MND evaluated the proposed project's short- and long-term noise impacts and concluded the project would result in less than significant noise generation and exposure impacts. Seven commenters expressed concerns that the proposed project would increase long-term dog-park related noise (i.e., dog barking and growling, loud human talking) at the Sanchez Arts Center and adjacent residences to levels considered a nuisance, annoying, or non-peaceful. While the commenters are correct that the proposed project would increase site usage, the generation of intermittent dog-park related noise would not produce a potentially significant impact for several reasons.

Section 2.4 of the IS/MND (pages (pp.) 3-4) describes the existing and proposed dog park site usage. The Table below summarizes the information described in Section 2.4 of the IS/MND:

Condition	Time Period		
	7:30 to 9:30 am	9:30 am to 4:30 pm	4:30 to 6:30 pm
Existing Site Use	10	3	15
Project Site Use	13	4	20

The proposed project would produce infrequent and intermittent noise in the form of dog barking, growling, etc. and human voices. The IS/MND describes that the proposed dog park hours would be set between 7:00 am and sunset (p. 55) and that the project would comply with the City of Pacifica Municipal Code Section 5-10.03, which makes it unlawful for any person to make loud noises that annoys or disturbs another person (pp. 54-55).

2. Creek Pollution

The IS/MND evaluated the proposed project's potential to impact adjacent San Pedro Creek, and a bioswale, evaluated by the City's Engineering Department, is part of the project. As stated on p. 49 of the IS/MND, "Implementing Mitigation Measure HYD-01 will require a more complete site design that includes considerations for site grading, more detailed site hydrology, the configuration of the filter system features (filter box, vegetated strip and bioswale), and associated specifications. Based on the information contained in the *Pacifica Dog Park Biofiltration Swale Technical Memo, Sound Watershed Consulting, LLC.* (Appendix C), it is estimated that a biofiltration swale system needs to be present at the site. The information provided in this Technical Memo can be used to develop more detailed designs and specifications for both the drop inlet and the bioswale".

Since the site slopes to the creek, the potential for the Dog Park runoff to flow to neighboring residential properties is low. Further, Mitigation Measure HYD-02 lists that "[a] more detailed design shall investigate the infiltration capacity of the onsite soils and subsurface conditions so that a more refined hydrologic estimate can be developed in support of the final design and construction specifications. With sufficient infiltration capacity, the bioswale could treat a larger proportion of the design (2 year) storm. The following design elements shall receive additional consideration by the City of Pacifica's Engineering Department (or qualified consultant) prior to construction of any element of the Dog Park, bioswale, or filter:

- 1) The configuration of the bioswale, drop inlet location, and drop inlet drain structures
- 2) Overflow structure design for the bioswale (to prevent erosion on steep slopes)
- 3) Conveyance features (e.g. either channels, swales, culverts or dispersal structures) at the outlet of the bioswale and drop inlet drain
- 4) Connecting features where concentrated peak flows occur at the confluence with San Pedro Creek (a small channel exists immediately below the line on Figure 5 of this Initial Study).
- 5) Refine estimates of existing infiltration to determine the need to design infiltration improvements into the swales
- 6) Selection of appropriate plant species for the swales that can provide both erosion control treatments, aesthetic values, and desired bioremediation effects".

Please also see the entire Mitigation Measures HYD-01 and HYD-02 as listed on p. 2 of the document. If the proposed bioswale (s) will be located within the jurisdictional creek area pursuant to California

Department of Fish and Game (CDFG) regulations, consultation with CDFG will occur, and a CDFG Section 1600 Streambank Alteration Agreement application will be prepared.

Finally, the capacity of the bioswales are listed in Table 4 on p. 50 of the IS/MND. This table is listed below for clarity:

Table 4
Proposed Bioswale Dimensions

Bioswale	Width (in feet)	Length (in feet)	Volume (cubic feet)
Upper	8	82	656
Middle	6	66	394
Lower	27	36	974
Total volume, all bioswales			2,024

3. Odors

The IS/MND evaluated the proposed project's potential to create objectionable odors and concluded that although the project had the potential to create objectionable odors under certain weather conditions, this intermittent occurrence would be less than significant. Four commenters expressed concerns that the proposed project would produce and/or worsen objectionable odors at surrounding land uses. While the commenters are correct that the project may create localized, intermittent objectionable odors, these odors would not affect a substantial number of people and would not result in a significant impact.

As identified on p. 1 of the IS/MND, the proposed project improvements include installation of a dog-waste bag dispenser on top of a steel post and, as identified on p. 26 of the IS/MND, free dog-waste bags would be provided for three months. As also identified on p. 1 of the IS/MND, a standard garbage bin encased in stainless-steel housing and a user education board that lists park rules and information/rationale regarding the importance dog-waste pick up would be installed. Collected dog waste would be placed in an on-site trash bin and removed once per week and placed in one of three Art Center trash bins that the City collects three times per week. These improvements would encourage dog-park users to curb their dogs, thereby reducing the source of any potential objectionable odors (i.e., dog urine and feces).

In addition, as identified in the introduction to this memorandum, should adjacent residences or Art Center tenants perceive the dog-park related odors to be objectionable, they may contact the City Department of Parks, Beaches and Recreation to log a complaint against the dog park.

4. Traffic

Two commenters expressed concerns that the proposed project would result in parking and traffic impacts. As identified on p. 62 of the IS/MND, the proposed project would add up to four am and pm peak hour trips to an existing traffic load of 800 trips per hour. This 0.5% increase in trips represents a less than significant in terms of trip generation. As identified on p. 61 of the IS/MND, the proposed project's four am and pm peak hour trips would combine with the five peak hour trips generated by the Art Center to result in a total of nine trips per hour, or approximately one trip every six to seven minutes. Even if all nine trips were to turn left (west) onto Linda Mar Boulevard, this trip rate would not cause significant traffic delays. Finally, as identified on p. 1 of the IS/MND, the proposed project improvements include striping of the existing parking area and the addition of nine new parking spaces.

The addition of nine new parking spaces provides sufficient parking capacity to handle peak hour visitors (up to five per hour) and may also help to alleviate any existing parking congestion. Therefore, the project would result in less than significant parking impacts.

5. Public Safety

P. 58 of the IS/MND states that “The proposed dog park is within an urbanized area and will not result in the need for the creation of any new government services or facilities. In addition, there are measures the City will undertake to ensure that the dog park is properly maintained (see Mitigation Measure HYD-01)”. Mitigation Measure HYD-01, at p. 47, includes the following:

1. “The City of Pacifica will, either on its own or through a contract with a civic organization such as POOCH:
 - Create an interpretive sign that educates the public about the impacts dogs can have to local aquatic and human health;
 - Create and distribute educational brochures that feature more in-depth information regarding the impacts of in-stream dog and person traffic; and
 - Implement an aggressive person-to-person education campaign during the first three months of dog park operation where visitors are given free dog-waste bags, a brochure, and a verbal explanation of the park rules.”

2. Alternatives

A formal alternatives analysis is not required as part of an Initial Study Checklist, and is only prepared for an Environmental Impact Report (EIR). As stated above in the introduction section of this document, the project “would avoid the effects or mitigate the effects to a point where clearly no significant effect on the environment would occur”. Therefore, the criteria for preparation of an EIR have not been met, and the preparation of an Initial Study/Mitigated Negative Declaration was performed.

However, as part of the due diligence, the City did consider alternative sites. As stated on p. 3 of the POOCH report (Appendix A) “We worked with the city manager’s office (Stephen Rhodes) and Parks, Beaches and Recreation department (Mari Brumm-Merrill) for over a year to determine a suitable site. Many sites were visited and discussed and the site that appeared excellent to both the city and the Pooch folks was the Sanchez Art Center, East side lawn area. (See attached map)

We discussed this idea with the tenants of the Sanchez building and the neighbors along the border of the proposed park. We heard their feedback and used that information in designing the park plan. For the neighbors, if we did not meet with them, we left behind a bright blue sheet of info (see attachment)

We went back to these same folks with the next stage. The Performing Arts Board voted unanimously to support the park. At the tenants meeting, all those present including the performing arts, the artists, and the credit union were all in favor with us proceeding. The neighbors were also contacted again. About ½ were in favor, and ½ did not want it in their area. One quote: “We have always thought of Sanchez as our backyard, and we don’t want change.” We left behind a pink sheet including the site map with the folks we did not personally meet with”.

Section C: Errata Sheet

The underlined text as shown below is text that is now added to the document, and ~~strickthrough text~~ signifies text that has been deleted.

Mitigated Negative Declaration, Page 1

The proposed dog park is located at the Pacifica Center for the Arts, at 1220 Linda Mar Boulevard in Pacifica, San Mateo County. The Pacifica Center for the Arts (hereinafter referred to as “the Arts Center”) is owned and operated by the City of Pacifica, ~~’s Department of Parks, Beaches and Recreation.~~

For the dog park, an area 23,415 square feet in size (roughly half an acre) and rectangular in shape will be enclosed with a green, vinyl-coated chain link fence four feet in height. The ground cover for the dog park will be decomposed granite. The City of Pacifica will provide a dispenser for storing dog-waste bags. The City of Pacifica, either on its own or through a local civic group such as in conjunction with the Pacifica Organization of Canine Helpers (POOCH), will provide education materials, free dog-waste bags, and a garbage receptacle that will be emptied weekly. Upon park opening, ~~POOCH stewards will implement a 3-month education campaign~~ will be implemented where they will hand out free bags will be distributed and encourage users will be encouraged to keep the park clean.

Mitigated Negative Declaration, Page 2

Mitigation Measure Hyd-01:

1. The City of Pacifica will reduce the amount of fecal matter from the dog park by providing the following:
 - A dog-waste bag dispenser at the site;
 - A trash can at the site that is emptied three times a week. ~~by Coastside Seavers.~~
2. The City of Pacifica will, either on its own or in conjunction with a local civic group such as ~~contract with the Pacifica Organization of Canine Helpers (POOCH),~~ to:
 - ~~Work with City staff to~~ Create an interpretive sign that educates the public about the impacts dogs can have to local aquatic and human health;
 - Create and distribute educational brochures that feature more in-depth information regarding the impacts of in-stream dog and person traffic; and
 - Implement an aggressive person-to-person education campaign during the first three months of dog park operation where visitors are given free dog-waste bags, a brochure, and a verbal explanation of the park rules.
3. The City ~~shall~~will install a Bacteria Bioretention System (passive-treatment filtration system) manufactured by Filterra (or similar). For more details please see the *Preferred Alternative for Addressing Fecal Coliform Runoff at the Pacifica Center for the Arts Dog Park* (January 6, 2010) (see Appendix B of this Initial Study Checklist). The system shall be installed and maintained by the City per the manufacturer’s specifications.
4. The Bacteria Bioretention System ~~shall~~will be checked biannually and will be maintained annually by City Public Works staff.
5. Water quality monitoring shall be part of this measure, including baseline monitoring before construction that evaluates turbidity and fecal coliform levels. Monitoring shall be done three times per year for the first three years after construction, in January, March and June, and a report analyzing the

effects of this monitoring shall be prepared by the City (or its consultant) and shall be available to the public for review.

6. If the monitoring and associated analysis reveals higher levels of turbidity and fecal coliform than baseline that exceed stated standards, then the dog park shall be temporarily closed until either the filter system is working properly again or another, more effective system is installed.

Implementation Responsibility: City of Pacifica, POOCH or similar civic organization

Effectiveness: Will reduce or avoid significant impacts

Timing: As listed above.

Initial Study, Page 47

Mitigation Hyd-01:

1. The City of Pacifica will reduce the amount of fecal matter from the dog park by providing the following:

- A dog-waste bag dispenser at the site;
- A trash can at the site that is emptied three times a week. ~~by Coastside Scavengers.~~

2. The City of Pacifica will, either on its own or in conjunction with a local civic group such as ~~contract with the~~ Pacifica Organization of Canine Helpers (POOCH), to:

- ~~Work with City staff to~~ Create an interpretive sign that educates the public about the impacts dogs can have to local aquatic and human health;
- Create and distribute educational brochures that feature more in-depth information regarding the impacts of in-stream dog and person traffic; and
- Implement an aggressive person-to-person education campaign during the first three months of dog park operation where visitors are given free dog-waste bags, a brochure, and a verbal explanation of the park rules.

3. The City ~~shall~~will install a Bacteria Bioretention System (passive-treatment filtration system) manufactured by Filterra (or similar). For more details please see the *Preferred Alternative for Addressing Fecal Coliform Runoff at the Pacifica Center for the Arts Dog Park* (January 6, 2010) (see Appendix B of this Initial Study Checklist). The system shall be installed and maintained by the City per the manufacturer's specifications.

4. The Bacteria Bioretention System ~~shall~~will be checked biannually and will be maintained annually by City Public Works staff.

5. Water quality monitoring shall be part of this measure, including baseline monitoring before construction that evaluates turbidity and fecal coliform levels. Monitoring shall be done three times per year for the first three years after construction, in January, March and June, and a report analyzing the effects of this monitoring shall be prepared by the City (or its consultant) and shall be available to the public for review.

6. If the monitoring and associated analysis reveals higher levels of turbidity and fecal coliform than baseline that exceed stated standards, then the dog park shall be temporarily closed until either the filter system is working properly again or another, more effective system is installed.

Implementation Responsibility: City of Pacifica, POOCH or similar civic organization

Effectiveness: Will reduce or avoid significant impacts

Timing: As listed above.

CITY OF PACIFICA
COUNCIL AGENDA SUMMARY REPORT
December 8, 2008

Agenda Item No.

SUBJECT:

Construction of a Dog Park on the East Side of Pacifica Center for the Arts (Sanchez Art Center), 1220 Linda Mar Blvd.

DISCUSSION:

The Pooch group presented the concept of a Dog Park to the PBR Commission in a study session, to the tenants of Pacifica Center for the Arts, and has made a concerted effort to contact neighbors and the Sports groups who use the west-side fields. The area of interest is the east side of the site that is not being utilized and previously was a play area for about 45 children, and before that a school yard.

Pooch has done a stellar job in formulating a well thought out project that will enhance the look of the site and provide a much needed Dog Park for Pacifica, considered a priority by many. This location could accommodate a park of this nature and is easily accessible to the mainstream as it is close in proximity to Highway 1. Pacifica is rich in open space but has limited available city owned sites.

The concept that Pooch has brought forward is well-thought out, creative, community-based, environmentally sensitive, volunteer driven, and has the potential of bringing a first class Dog Park to Pacifica. Much like many of the projects Pacifica has championed, the caliber of the park will add to the uniqueness of Pacifica in that it encompasses native plants, environmentally friendly components, and it will accommodate and section off large vs. small dog areas while allowing for time frames to allow special needs dogs (and their owners) to recreate.

The PCA Tenants are supportive as it will enhance the appearance of a neglected area, help offset vandalism due to higher visibility of use, and will be a more viable solution as the back area is currently used unofficially by many off lead dogs/owners. Sports concerns have commented that a controlled & fenced dog park may be well received and would reduce the dog litter on the existing fields & grounds. Additional parking spaces near the park will go to offset parking concerns and will create additional parking when the Dog Park is not in operation.

A neighbor posed some very comprehensive and pertinent questions, some of which have been addressed by Pooch with the environmental concerns to be answered during the environmental review process. The neighbors representing three households came forward.

Issues:

- **Drainage/Creek proximity**-subject to environmental reports, use of specialty grasses to assist.
- **Maintenance:** the city will incorporate trash pick up twice a week (Coastside Scavenger), mow lawn if planted, and provide general maintenance. An agreement with Pooch will be developed for volunteer coverage to include dog litter pick-up, grounds clean-up, and general oversight.

- **Noise**-the use of native bushes, trees, plants are being considered to buffer the sound. Pooch research of Dog Parks mentions that active dogs in a setting of this nature generally don't bark excessively as dogs left in backyards. Opening and closing times would also be a factor for consideration.
- **Parking Mitigation**-additional parking is proposed, coordinating event schedules, and use of signage.
- **Restrooms**-do not exist as a rule in dog parks as most users spend an average of ½ hour and park is for relief for dogs not owners.
- **Cost**-fundraising, grants, donations by organization. There are funds available in fund 22 for cost of reviews/reports.
- **Hours of operation**- Would be determined in the course of ongoing meetings and could follow the twilight rule and neighbor sensitive weekend opening times much like the Skate Park.
- **Operation and Oversight**: Rules and Regulations will be developed as well as a volunteer agreement and the Park will be subject to temporary closure if policies are not followed in keeping with the 'responsible owner' guidelines.

Beverly Kingsbury, President of Pooch, has met with the City Manager and Directors and presented a well community supported project that incorporates public education and strong volunteer buy in. As the process unfolds rules, regulations, times of use, volunteer schedules, signage, and maintenance schedules will be formulated. This will be a comprehensive process that will take time and will be subject to many approvals & requirements.

Final costs and allocations will be determined after the completion of environmental reports with staff returning to Council with these figures. It should be noted that the Roy Davies Trust funds will spend about \$600,000 in recreation facility improvements which is an offset to capital expenditures that would have been expended out of fund 22.

The PB& R Commission, by motion of 7-0 in favor, approves this location and supports the efforts of the community-based Pooch project. The Dog Park will receive scrutiny and review by the Planning Commission as in all city projects of this nature and scope.

FISCAL IMPACT:

\$60,000 out of Fund 22

ATTACHMENTS:

Pooch History

Agenda Summary Report

Construction of a Dog Park on the East Side of Pacifica Center for the Arts, 1220 Linda Mar Blvd.

December 8, 2008

COUNCIL ACTION REQUESTED:

By motion, approve the east side of the Pacifica Center for the Arts site (1220 Linda Mar Blvd.) as a location for consideration of a Dog Park and direct staff to proceed with environmental reports and reviews.

Authorize Budget Authority of \$60,000 for reports and reviews from Fund 22, Capital Expenditures.