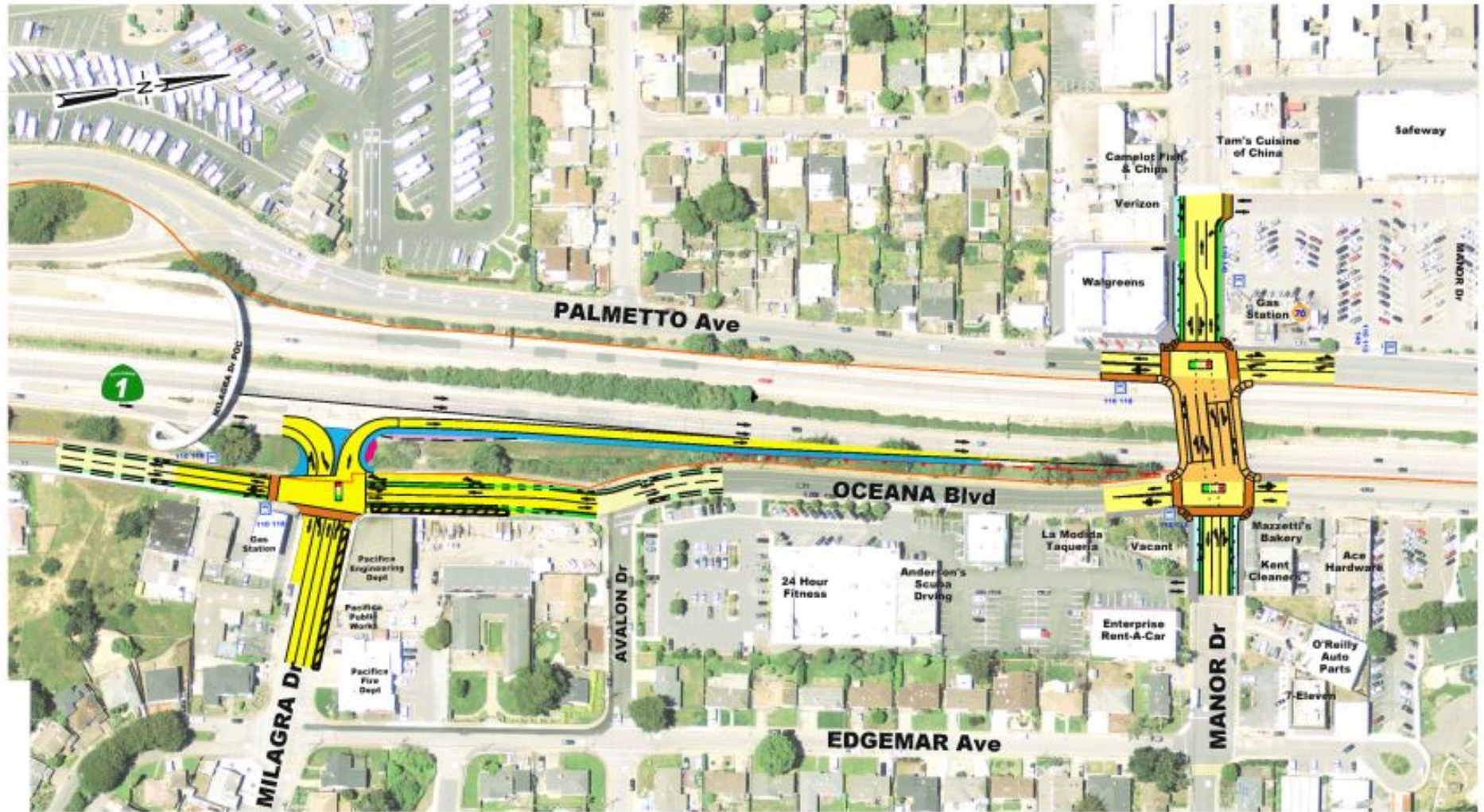


Highway 1/Manor Drive Overcrossing and Northbound On-Ramp at Milagra Dr Improvement Project



NO SCALE

PRELIMINARY STUDY
FOR DISCUSSION PURPOSES ONLY



AECOM



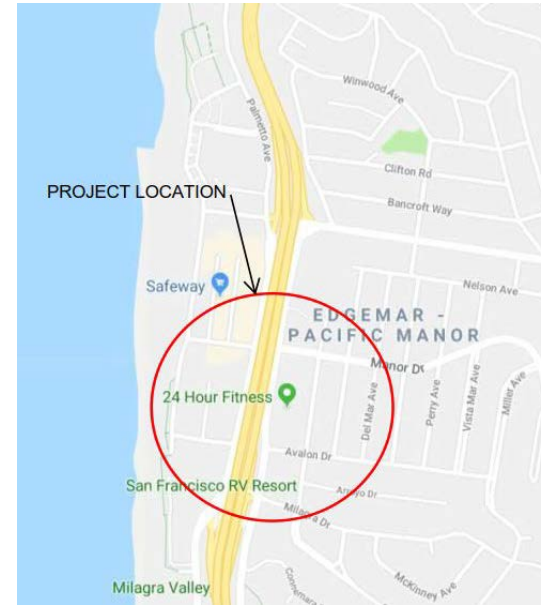
COMMUNITY MEETING

TUESDAY, NOVEMBER 27, 2018

6:30 PM – 8:30 PM

**LOCATION:
PACIFICA CITY COUNCIL CHAMBERS
2212 BEACH BOULEVARD
PACIFICA, CA 94044**

**PLEASE JOIN US!!
YOUR INPUT MATTERS TO US!!
Questions? Please contact:
engineering@ci.pacifica.ca.us or (650) 738-3767**



Highway 1 / Manor Drive Overcrossing Improvement Project

The City of Pacifica invites you to join us for a community meeting to discuss proposed safety enhancements and improved local traffic circulation and operations in the vicinity of Manor Drive and Milagra Drive.

- Alleviate the weekday peak hour traffic and weekend visitor traffic
- Improve pedestrian and bicycle access
- Improve overall safety of the intersections and overcrossing
- Install a northbound on-ramp at Milagra Drive