

# City of Pacifica v. 2

Wastewater Division  
Department of Public Works

## Calera Creek Water Recycling Plant

700 Coast Highway, Pacifica, CA 94044  
Office 650-738-4660 Fax 650-355-7256  
Group Tours Available Upon Request

### Wastewater Division Management Staff

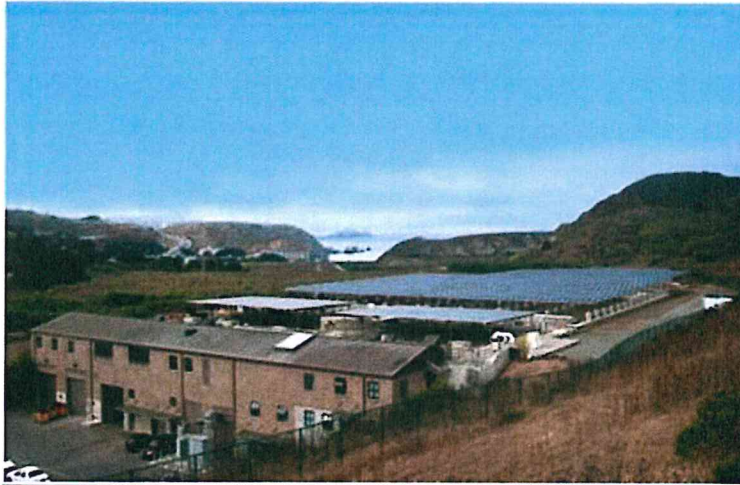
Brian Martinez  
(650)738-4669  
**Collection System  
Manager**

Pedro Mendoza  
(650)738-4663  
**Plant Operations  
Manager**

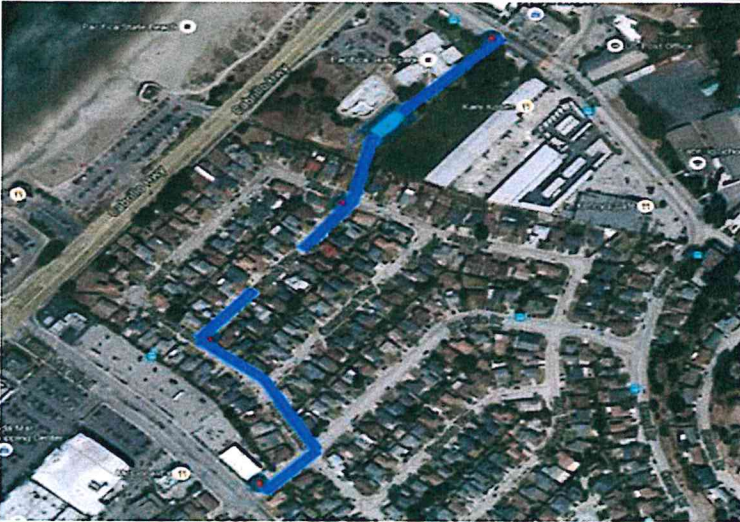
Rey Mendez  
(650)738-7475  
**Assistant  
Superintendent for  
Collection System**

Maria Aguilar  
(650)738-4664  
**Assistant  
Superintendent for  
Plant Operations**

Van Ocampo  
(650)738-3767  
**Director of Public Works**



The Calera Creek Water Recycling Plant is a tertiary treatment plant, set into the hillside in an old rock quarry, discharging into a restored Calera Creek. Construction by Walsh Pacific started in September 1996 and the new plant started treating wastewater in September 2000

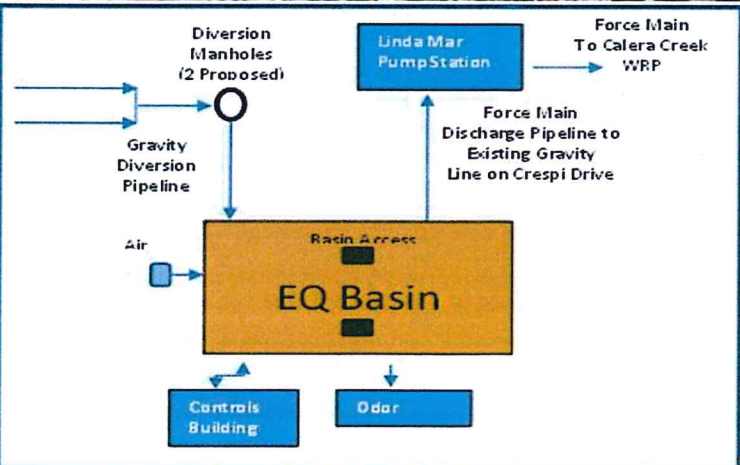


## Wet Weather Equalization Basin Project

The **Wet Weather Equalization Basin Project (EQ Basin)** is one of the projects recommended in the City of Pacifica Collection System Master Plan and mandated by the San Francisco Regional Water Quality Control Board to reduce potential Sanitary Sewer Overflows (SSO) in the lower Linda Mar area. The EQ Basin will only be used during storms and for maintenance during dry season. This will allow repairs and maintenance on the wastewater force main during dry season & will reduce peak weather flows to the Calera Creek Water Recycling Plant during storms. The EQ Basin project is currently in the environmental design phases with the final design package to be completed the end of 2016. The EQ Basin will be located within the parking lot for the City of Pacifica's Community Center (located at 540 Crespi Dr.) on the east side of Highway 1.

### Project Highlights:

- Construction of the 2.1-million-gallon-capacity rectangular-shape underground EQ Basin, two diversion structures to passively divert excess flows from the existing Linda Mar & Arguello sanitary sewer lines, & installation of underground conveyance piping to transport the excess flow to the EQ Basin during storm events.
- Construction of the EQ Basin & conveyance piping is currently expected to begin in April 2017 & be completed in July 2018
- The project's design and construction schedule will comply with the Cease and Desist Order and Consent Decree requirements to have the project completed by December 31, 2018.



Scan the bar code on the right to learn more about the Wet Weather Equalization Basin Project.





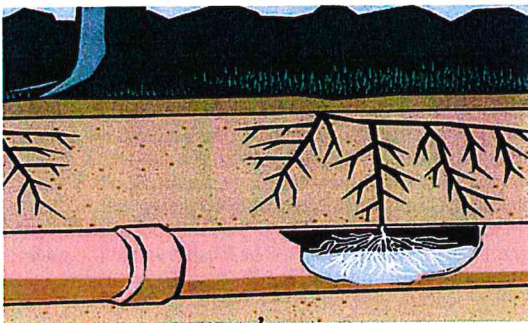
# Collection System Capacity Upgrade and Replacement Project FY 2016-17

The City of Pacifica has been actively upgrading and replacing sanitary sewer mainlines throughout the City especially in areas where Inflow and Infiltration (I&I) is a big problem. For Fiscal Year 2016-17, the City plans to upgrade and replace the sewer mainlines in the northeast lower Linda Mar and Pedro Point areas - a total of approximately 28,000 linear feet of pipes.



## City of Pacifica Lateral Replacement Program

Beginning July 1, 2016 the City of Pacifica will inspect qualifying residents' sewer laterals for defects, leaks and failures, and provide reimbursement grants for the replacement of qualifying laterals that are leaking due to root infiltration, breaks, cracks, failed pipe, "Orangeburg" pipe, and alignment problems at \$1,000. The program will expire on June 30, 2017 or when 50 laterals are replaced, whichever comes first.



## Winter Storm Tip: PLEASE USE LITTLE OR NO WATER DURING A STORM EVENT

The Pacifica Sanitary Sewer infrastructure is an aging system and takes on a lot of rain water in storm events. Limiting water usage can significantly decrease the chances of sewer overflows. Sewer overflows have a tremendous cost to the City in fines, and ultimately, increased taxes.

## What Not to Flush

These types of items can lead to sanitary sewer overflows, which are costly and messy!

- Cleaning wipes of any kind
- Qtips/Cotton Swabs
- Hair
- Feminine Products
- Diapers
- Cleaning sponges
- Candy or wrappers
- Rags or towels
- Fat, Oil and Grease
- Pharmaceuticals/Drugs \*

\*Rx/Pharmaceutical/Drug Drop Box at Pacifica Police Department Lobby

